

Welcome to Prešov



IPZ Prešov, a.s.
Slavomir Murin
info@ipzpresov.com

Slovakia – basic facts

Official name :	Slovak Republic
Currency:	Euro; (EUR) ; €
Political system:	Parliamentary republic
Geographic Location :	Central Europe
Time zone:	+1 GMT
Neighbouring countries:	Czech Rep., Austria, Poland, Hungary, Ukraine
Population:	5,379,455
Size(in km ²)	49,036
Density of population(per km ²)	110
Population in cities:	58%
Calling code:	+421
Membership in international organisations:	UNO, OECD, EU, WTO, NATO, Visegrad Group

Slovakia – Macroeconomical figures

GDP per capita ranges from 175% of EU average in Bratislava to only 50% in Eastern Slovakia

	2004	2005	2006	2007	2008	2009	2010	2011*
Real GDP Growth	3,90%	5,30%	6,10%	8,30%	10,40%	6,40%	-4,70%	4,00%
Inflation (CPI)	7,50%	2,70%	4,48 %	2,76 %	4,60%	1,82 %	0,77 %	3,42 %
Registered Unemployment	14,3%	16.2%	13.3%	11%	9.6%	12,03%	14,38%	13,95%
Year's average								
Export in EUR billion	31,2	35,3	43,45	48,07	50,28	38,7	48,63	54,952

* according to the expectation from Statistical Office of the Slovak Republic

For more information please visit



10 reasons for Investing in Slovakia

- ▶ Central European hub
- ▶ Political & economic stability
- ▶ 19 % flat tax rate(temporary VAT is 20%)
- ▶ Availability of highly skilled workforce
- ▶ Low labour costs vs. High labour productivity
- ▶ Liberal labour code
- ▶ Large selection of industrial land and offices available for purchase/lease
- ▶ Strong engineering tradition
- ▶ Since 2009 currency risk minimized by adopting the euro
- ▶ Infrastructure is growing steadily

Invest in Slovakia – Invest in Prešov

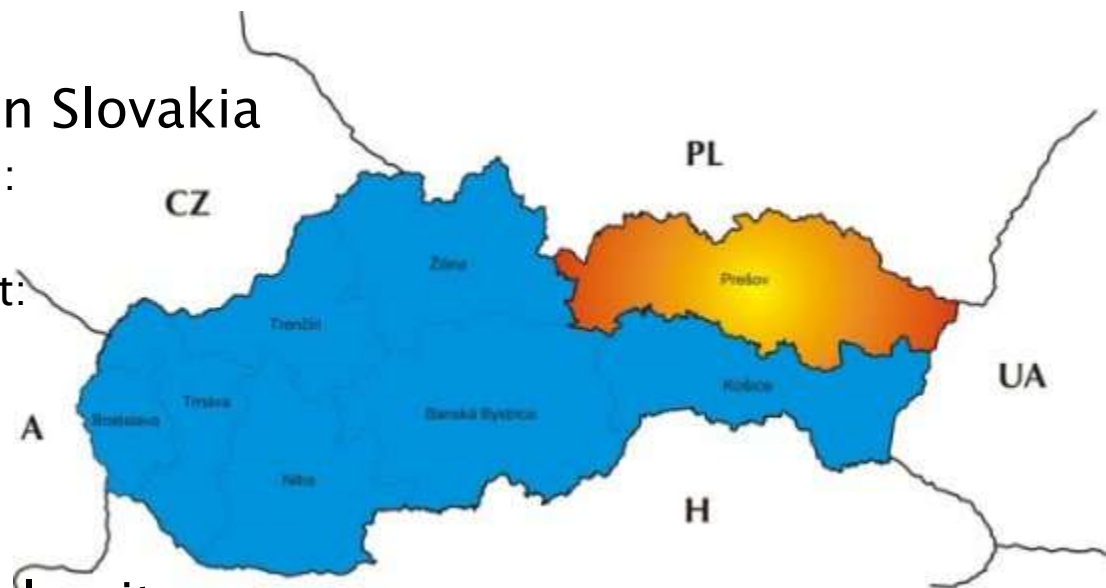
- ▶ Location





Prešov is :

- ▶ The third biggest town in Slovakia
 - Population of Prešov region:
 - 801 939
 - Population of Prešov district:
 - 164,331
 - Population of Prešov city:
 - 91,650
- ▶ Centre of Higher regional units
- ▶ The city with quality technical and transport infrastructure
- ▶ The city with great human potential
- ▶ Adequate space to develop business and industry
- ▶ The city with a long industrial and scientific research tradition



Brief information about Prešov



- ▶ Prešov dominates the north – eastern Slovakia and the Prešov Region which is the biggest Slovak self – governing region based on extent, comprising of 13 districts.
- ▶ Prešov consists of four administrative land territories:
 - ▶ Prešov, Solivar, Šalgovík and Nižná Šebastová.
- ▶ Number of citizens: 91 200
- ▶ Total area: 71 sq km
- ▶ The third largest town in Slovakia
- ▶ Founded in: 1247
- ▶ In the radius of 100 km from Prešov there are border crossings with Poland, Hungary and Ukraine
- ▶ The town Prešov is situated at the 49th parallel line as Paris
- ▶ Distances to strategic European cities:
- ▶ Road distance to other towns in Slovakia:



Bratislava	414 km
Košice	36 km
Poprad	82 km
Banská Bystrica	211 km
Žilina	224 km
Nitra	326 km

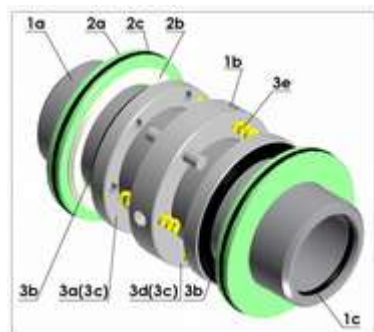
Athens	2157 km
Berlin	1155 km
Brussels	1570 km
London	2188 km
Madrid	2916 km
Paris	1720 km
Roma	1675 km
Stockholm	2255 km
Vienna	475 km



The most important foreign companies established in Prešov and its surrounding

Prevailing types of industry

engineering industry,
 electro-technical industry,
 textile industry,
 wood-processing industry,
 printing industry,
 food-processing industry



Name of the company	Country
ZVL Auto, s.r.o. Prešov	Italy
KRONOSPAN SK, s.r.o.	Cyprus
Gemor Fashion, s.r.o.	Holland
BETATEX, s.r.o.	Belgium
EGOTEX, s.r.o.	Italy
SPINEA, s.r.o. Prešov	Luxembourg
CEMM THOME SK, spol. s r.o.	France
LEAR Corporation Seating Slovakia, s.r.o.	USA
Glunz & Jensen s.r.o.	Denmark
FRANZ KAHL SLOVAKIA s.r.o.	Germany
Pivovar Šariš	South Africa

Average Monthly Wage



Region, SR	2008			2009			2010		
	Average monthly wage of employee in the economy of the SR								
	Total	Index	Index	Total	Index	Index	Total	index	index
	(EUR)	SR=100	2008	(EUR)	SR=100	2009	(EUR)	SR=100,0	2010
		2007			2008			2009	
Bratislavský	944	131	108	970	130	103	991	129	102
Trnavský	676	93,5	106	689	92,5	102	705	91,7	102
Trenčiansky	630	87,2	108	635	85,3	101	657	85,4	104
Nitriansky	606	83,9	110	625	83,9	103	636	82,7	102
Žilinský	646	89,3	110	657	88,2	102	686	89,2	104
Banskobystrický	600	83	107	605	81,3	101	635	82,6	105
Prešovský	546	75,5	110	573	77	105	594	77,2	104
Košický	672	92,9	107	684	91,9	102	716	93,1	105
SR spolu	723	100	108	745	100	103	769	100	103

The lowest personal costs in Slovakia are long term in Prešov region

Average nominal monthly wages (€) in selected branches by months in 2011

Month	Industry total	of which				Construction	Sale and repair of motor vehicles	Wholesale, except motor vehicles	Retail trade, except motor vehicles	Accommodation	Restaurant and beverage serving	Transport and storage	of which	Information and communication	Selected market services
		mining and quarrying	industrial production	electricity gas, steam and air conditioning supply	water supply; sewerage								Postal and courier activities		
january 2011	771	823	748	1239	815	552	723	727	536	555	360	690	604	1479	792
february 2011	756	940	738	1145	721	537	705	726	533	533	357	660	580	1707	780
march 2011	815	976	793	1276	806	576	721	735	549	552	359	700	623	1709	794
average 2011	781	913	760	1220	781	555	716	729	539	547	358	683	602	1629	789

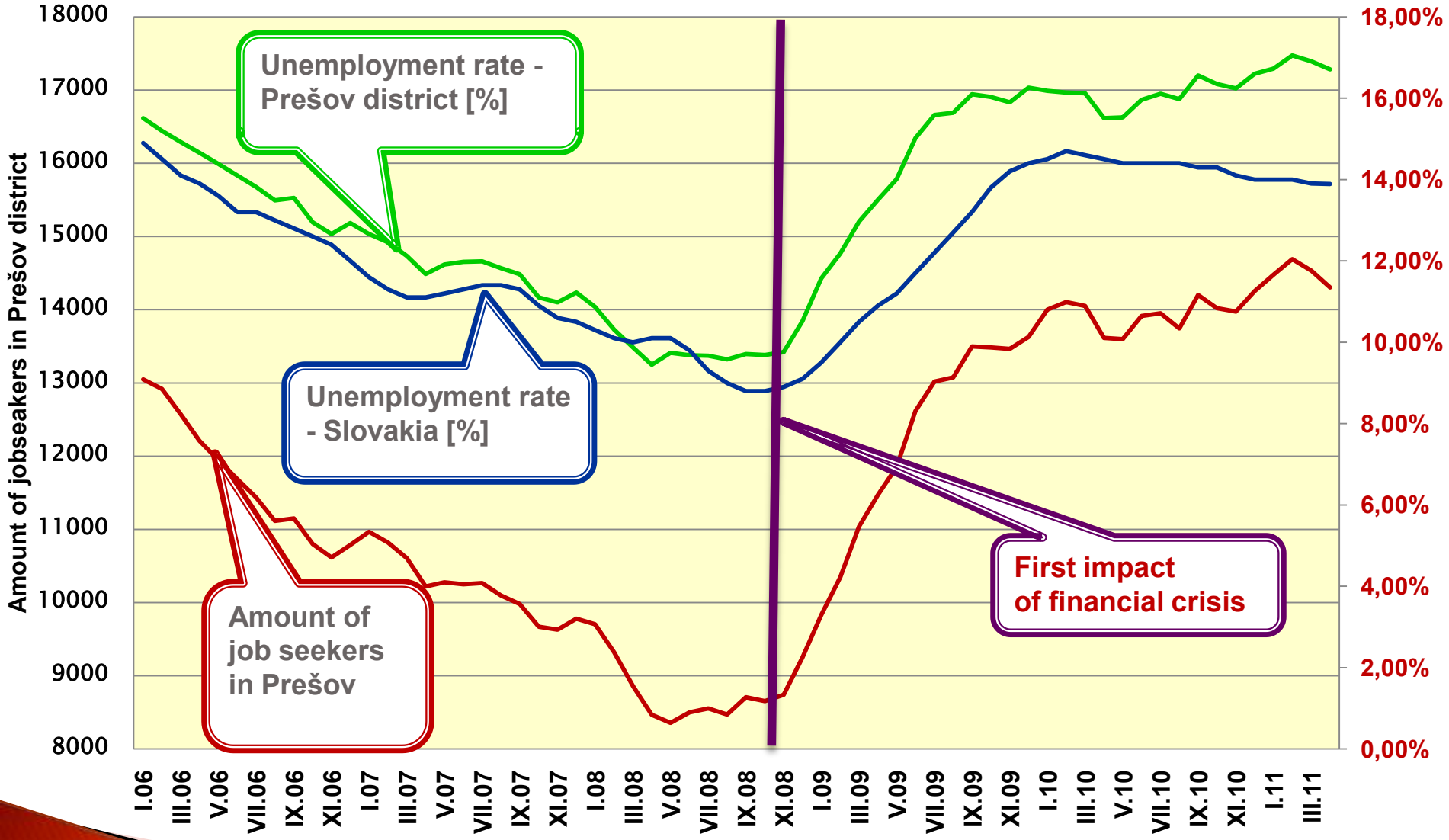
For more information please visit



Statistical Office of the Slovak Republic



Comparison of unemployment rate – Slovakia vs. Prešov district



Unemployment

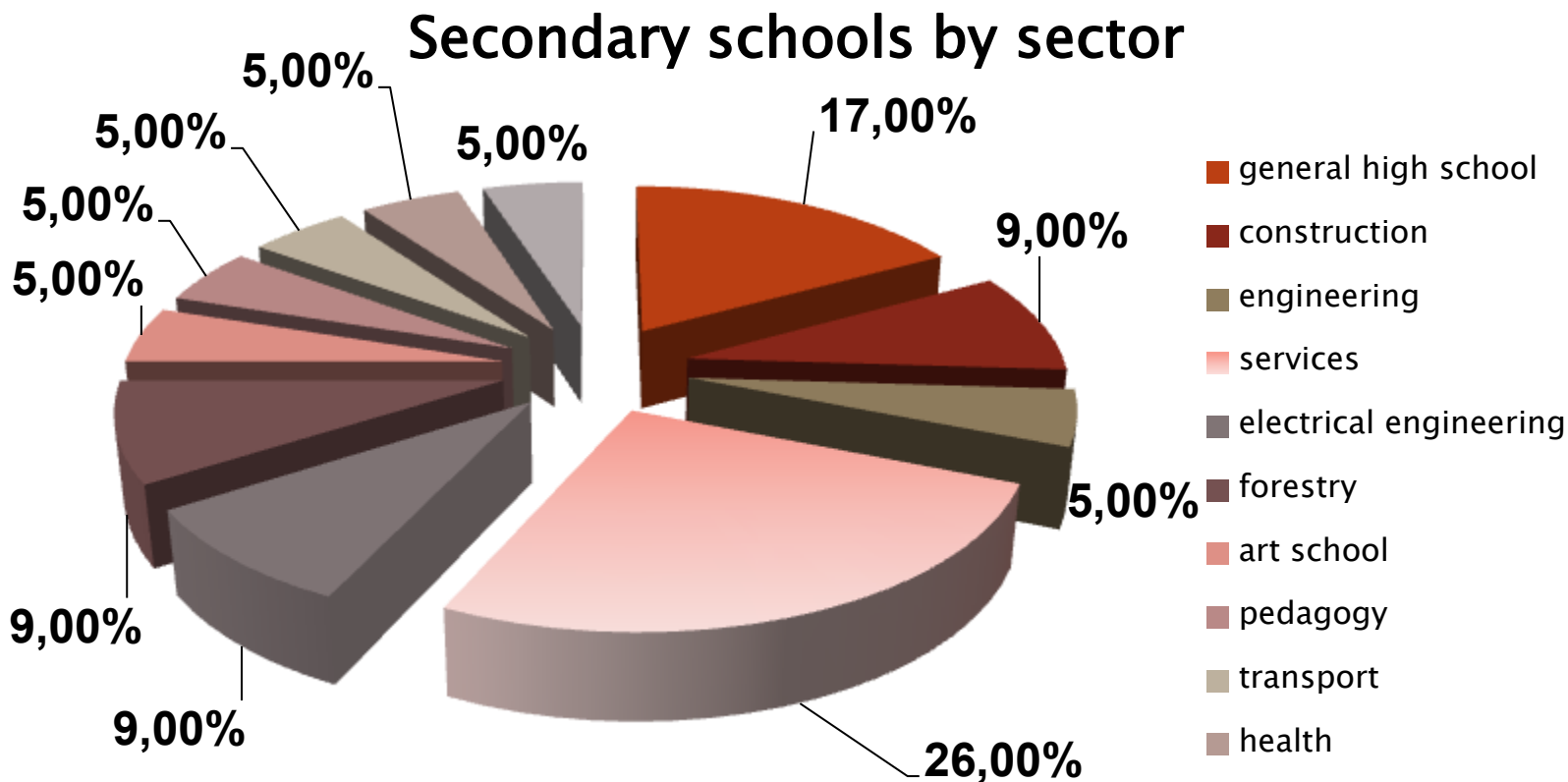


Region, SR	2008				2009				2010			
	Number of unemployed			Unempl oyment rate in %	Number of unemployed			Unempl oyment rate in %	Number of unemployed			Unempl oyment rate in %
	Total (Thou s. perso n)	In % of the SR	Index 2008 2007		Total (Thous. person)	In % of the SR	Index 2009 2008		Total (Thous. person)	In % of the SR	Index 2010 2009	
Bratislavský	12,4	4,8	87,9	3,6	16,3	5	131,5	4,7	20,9	5,4	128,2	6,1
Trnavský	18,3	7,1	97,9	6,2	27,5	8,5	150,3	9,1	36,6	9,4	133,1	12
Trenčiansky	13,9	5,4	83,2	4,7	21,4	6,6	154	7,3	30,7	7,9	143,5	10,2
Nitriansky	31,7	12,3	84,8	8,8	45,7	14,1	144,2	13	54,1	13,9	118,4	15,4
Žilinský	25,9	10,1	77,1	7,7	35,4	10,9	136,7	10,6	48,7	12,5	137,6	14,5
Banskobystrický	59,5	23,1	91,7	18,2	59,8	18,4	100,5	18,8	60,3	15,5	100,8	18,6
Prešovský	48,7	18,9	94,2	13	62,4	19,2	128,1	16,2	72	18,5	115,4	18,6
Košický	47,2	18,3	86,3	13,5	55,8	17,2	118,2	15,5	65,8	16,9	117,9	18,3
SR in total	257,5	100	88,2	9,6	324,2	100	125,9	12,1	389	100	120	14,4



Secondary education

The secondary school system is also well developed. It is represented by 37 secondary schools. Some of the technical oriented schools accept requirements of companies in adjusting syllabus according to the needs of companies.





University of Presov

Consists of 8 faculties:

- [Faculty of Arts](#)
- [Faculty of Greek-Catholic Theology](#)
- [Faculty of Humanities and Natural Sciences](#)
- [Faculty of Management](#)
- [Faculty of Education](#)
- [Faculty of Orthodox Theology](#)
- [Faculty of Sports](#)
- [Faculty of Health Care](#)



Technical university in Košice

Consists of 9 faculties:

- [Faculty of Manufacturing Technologies located in Prešov](#)
- [Faculty of Electrical Engineering and Informatics](#)
- [Faculty of Civil Engineering](#)
- [Faculty of Mechanical Engineering](#)
- [Faculty of Mining, Ecology, Process Control and Geotechnology](#)
- [Faculty of Metallurgy](#)
- [Faculty of Economics](#)
- [Faculty of Arts](#)
- [Faculty of Aeronautics](#)



Partnership between University and factories



Mr. Karaffa , CEO MSC Electronics SR, a member of IT Valley association, established investors in Industrial Park Prešov–Záborské



▶ Activities of the Association:

- ▶ Creation of economic, social, and technological conditions and stimulation of human resources with the goal to build a centre of excellence for information and communication technologies in the region of eastern Slovakia
- ▶ Help and cooperation by increasing the quality of educational and training programs that are offered by the local universities and the IT sector
- ▶ Support of initiatives focusing on making the sector of information and communication technologies in the region of eastern Slovakia more attractive for the workforce, students, and IT companies from all of Slovakia and abroad
- ▶ Support of activities leading to the transformation of eastern Slovakia to a region with a knowledge society and economy
- ▶ Directing the development of the information society in the region
- ▶ Support of initiatives and activities leading to the reduction of regional disparities and to the increase of social inclusion using information and communication technologies (e-inclusion)
- ▶ Creation of a communication platform between the IT industry, public administration and educational institutions in the region
- ▶ Support of science and research projects in the field of IT
- ▶ Search for information sources and support funds for the execution of own activities

„The town of Presov is interested in the allocation status of member associations in IT Valley Association.“
Mr. Pavel Hagyarí, Mayor of city of Prešov 21.3.2011

Forms of Investment Aid

- ▶ **CASH GRANT** (paid *ex post*, based on annual costs rep
- ▶ **INCOME TAX RELIEF** (during 5 years, starting at latest 3 years after approval of the aid)
- ▶ **CONTRIBUTIONS ON NEW JOBS** (up to 40% – 50% of 2-year total labor costs per each new employee) – applicable in districts with unemployment rate higher than average rate
- ▶ **TRANSFER OF THE STATE PROPERTY** to the investor at the discounted price

THE TOTAL SUM OF REQUESTED FORMS **CANNOT EXCEED** THE MAXIMUM POSSIBLE AMOUNT OF THE AID – **40% – 50%** OF THE ELIGIBLE COSTS.

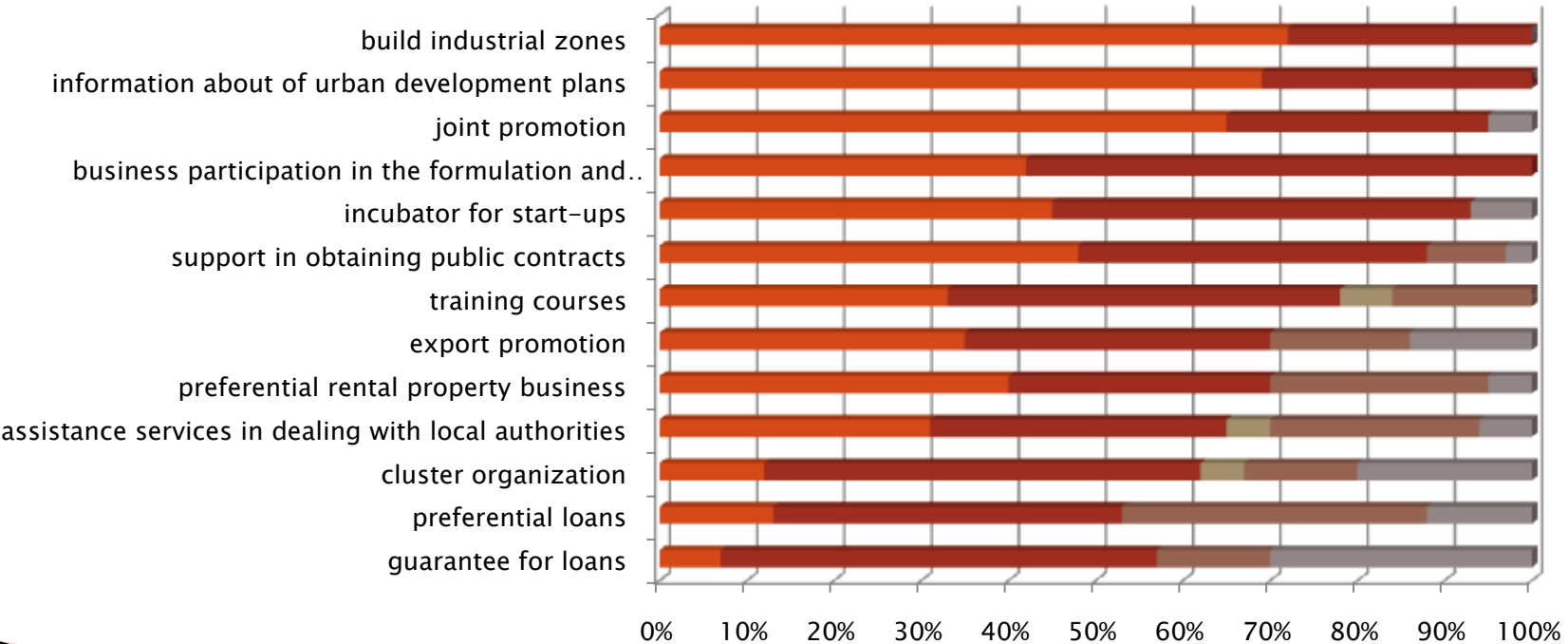
For more information please contact :
Slovak Investment and Trade Development Agency
Martinčekova 17, 821 01 Bratislava, Slovak Republic

www.sario.sk



Research about business environment in Prešov – 7/2007

Definitely yes Rather yes Without view Rather not Definitely not



www.ainova.sk
www.bermangroup.cz

Industrial park Záborské Prešov



- ▶ Greenfield industrial zone
- ▶ Completely ready since 1.1.2009
- ▶ Available area: 300,000 m²
 - Sale (€/m²)
 - Rent (€/year/m²)



INFRASTRUCTURE

▶ Electric power

- Installed capacity:
 - Stage A 2,6-4,6 MW
 - Stage B 4-9,5 MW
 - Stage C 9,5-14,7 MW



▶ Gas

- Middle pressure gas connection D 160, 0,3 MPa
- Gas connection with capacity of 1 000 m³/hr
- Calculated capacity: 300 kPa
- Working capacity : 200 kPa
- Min. working pressure : 60 kPa
- Pipe: PE 100, SDR 17,6
- Length of connection: D 110 – 157 m

▶ Water supply

- Drinking water: max. capacity per hour $Q_m = 10$ l/s, DN/ID 200, PN 10
- Fire-fighting water: max. capacity per hour $Q = 15$ l/s
- Waste water Drainage: Q_s max. = 10 – 25 l/s, Pipes: from DN 300 to DN 600 mm
- Solid waste Internal processing of waste – communal waste disposal

Administration of the industrial park includes

- ▶ Construction activities
- ▶ Engineering and investor activity in construction,
- ▶ Procurement activities associated with performance reports and renting real estate for third parties
- ▶ Energy supply (electricity, heat, gas) and services related to energy supply, water (drinking water and Technology),
- ▶ Waste management, transportation and disposal



Established investors

Honeywell®

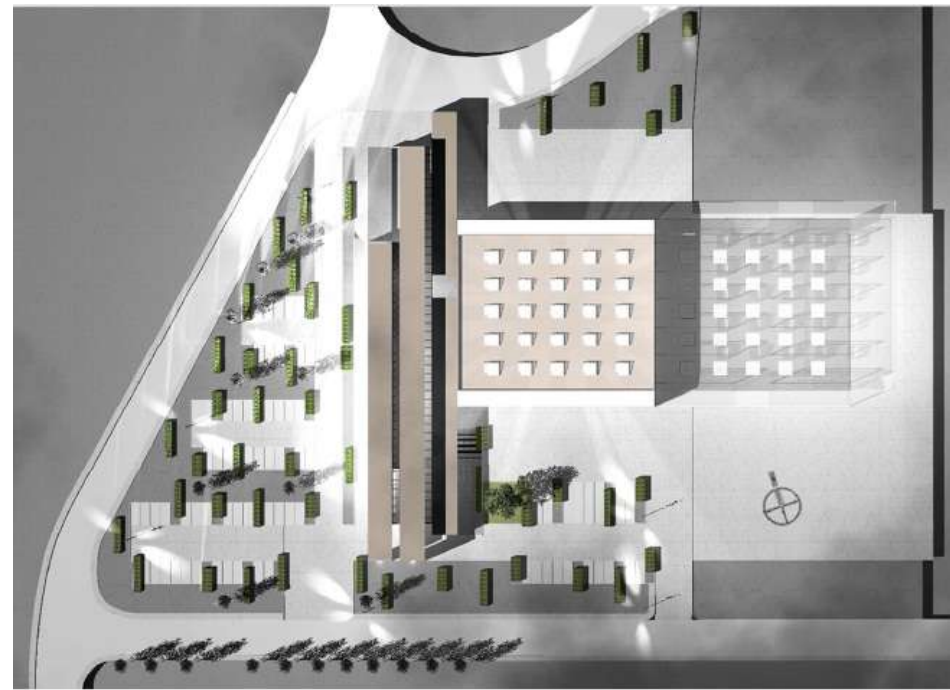


Start of production: spring 2012

Established investors

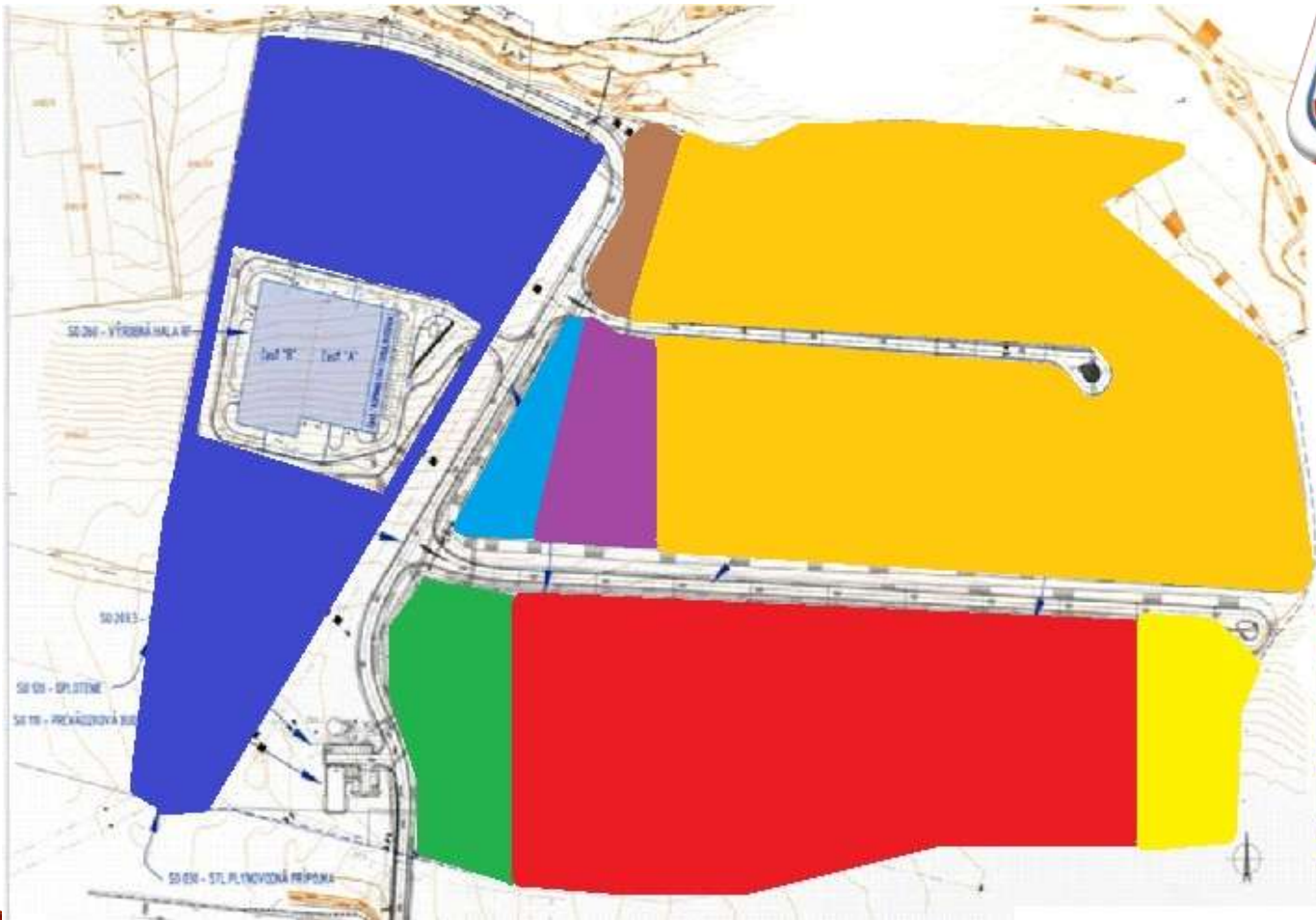


MSC Electronics



Start of production: summer 2012

Zones in Industrial Park Prešov – Záborské



-  MSC Electronics
-  Honeywell
-  reserved for Honeywell
-  1. Honeywell's supplier
-  2. Honeywell's supplier
-  FREE cca 10 ha (for sale or rent)
-  ASIS - local company
-  private developer

Thank you for your attention



For more information please visit our website or contact us

IPZ Prešov, a.s.
Slavomir Murin
Tel: +421(0) 918 188 665
www.ipzpresov.com
info@ipzpresov.com