

Welcome to Prešov



IPZ Prešov, a.s.
Slavomir Murin
info@ipzpresov.com

Slovakia – basic facts

| Official name : | Slovak Republic |
|---|---|
| Currency: | Euro; (EUR) ; € |
| Political system: | Parliamentary republic |
| Geographic Location : | Central Europe |
| Time zone: | +1 GMT |
| Neighbouring countries: | Czech Rep., Austria, Poland, Hungary, Ukraine |
| Population: | 5,379,455 |
| Size(in km ²) | 49,036 |
| Density of population(per km ²) | 110 |
| Population in cities: | 58% |
| Calling code: | +421 |
| Membership in international organisations: | UNO, OECD, EU, WTO, NATO, Visegrad Group |

Slovakia – Macroeconomical figures

GDP per capita ranges from 175% of EU average in Bratislava to only 50% in Eastern Slovakia

| | 2004 | 2005 | 2006 | 2007 | 2008 | 2009 | 2010 | 2011* |
|-------------------------|-------|-------|--------|--------|--------|--------|--------|--------|
| Real GDP Growth | 3,90% | 5,30% | 6,10% | 8,30% | 10,40% | 6,40% | -4,70% | 4,00% |
| Inflation (CPI) | 7,50% | 2,70% | 4,48 % | 2,76 % | 4,60% | 1,82 % | 0,77 % | 3,42 % |
| Registered Unemployment | 14,3% | 16.2% | 13.3% | 11% | 9.6% | 12,03% | 14,38% | 13,95% |
| Year's average | | | | | | | | |
| Export in EUR billion | 31,2 | 35,3 | 43,45 | 48,07 | 50,28 | 38,7 | 48,63 | 54,952 |

* according to the expectation from Statistical Office of the Slovak Republic

For more information please visit



10 reasons for Investing in Slovakia

- ▶ Central European hub
- ▶ Political & economic stability
- ▶ 19 % flat tax rate(temporary VAT is 20%)
- ▶ Availability of highly skilled workforce
- ▶ Low labour costs vs. High labour productivity
- ▶ Liberal labour code
- ▶ Large selection of industrial land and offices available for purchase/lease
- ▶ Strong engineering tradition
- ▶ Since 2009 currency risk minimized by adopting the euro
- ▶ Infrastructure is growing steadily

Invest in Slovakia – Invest in Prešov

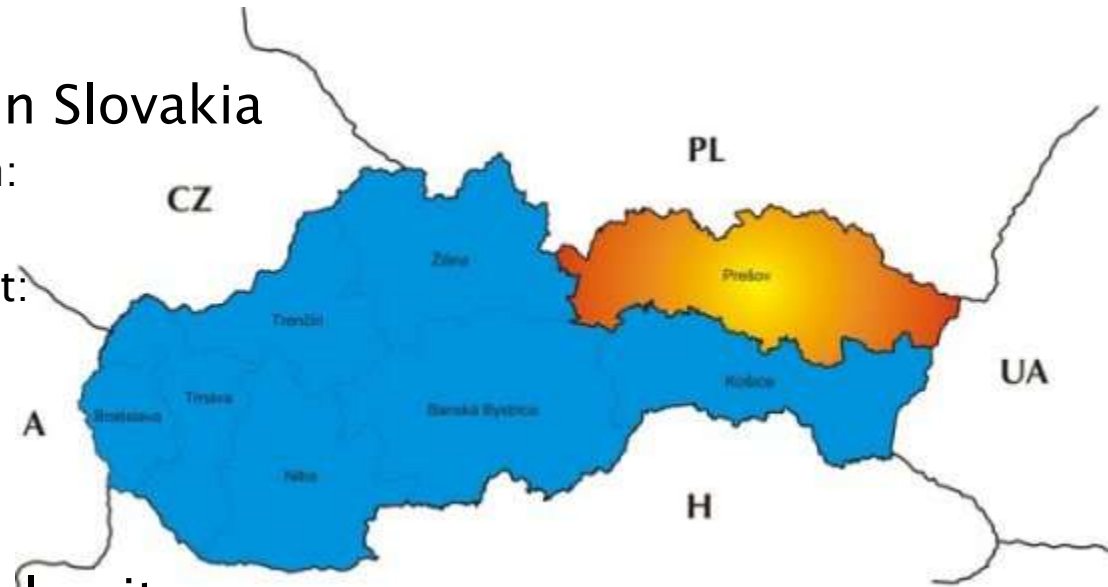
- ▶ Location





Prešov is :

- ▶ The third biggest town in Slovakia
 - Population of Prešov region:
 - 801 939
 - Population of Prešov district:
 - 164,331
 - Population of Prešov city:
 - 91,650
- ▶ Centre of Higher regional units
- ▶ The city with quality technical and transport infrastructure
- ▶ The city with great human potential
- ▶ Adequate space to develop business and industry
- ▶ The city with a long industrial and scientific research tradition



Brief information about Prešov



- ▶ Prešov dominates the north – eastern Slovakia and the Prešov Region which is the biggest Slovak self – governing region based on extent, comprising of 13 districts.
- ▶ Prešov consists of four administrative land territories:
 - ▶ Prešov, Solivar, Šalgovík and Nižná Šebastová.
- ▶ Number of citizens: 91 200
- ▶ Total area: 71 sq km
- ▶ The third largest town in Slovakia
- ▶ Founded in: 1247
- ▶ In the radius of 100 km from Prešov there are border crossings with Poland, Hungary and Ukraine
- ▶ The town Prešov is situated at the 49th parallel line as Paris
- ▶ Distances to strategic European cities:
- ▶ Road distance to other towns in Slovakia:



| | |
|-----------------|--------|
| Bratislava | 414 km |
| Košice | 36 km |
| Poprad | 82 km |
| Banská Bystrica | 211 km |
| Žilina | 224 km |
| Nitra | 326 km |

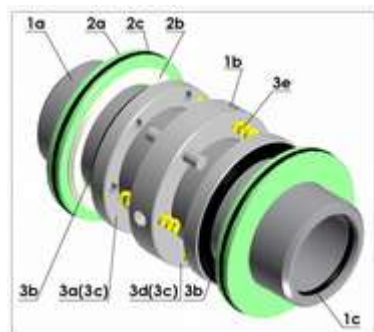
| | |
|-----------|---------|
| Athens | 2157 km |
| Berlin | 1155 km |
| Brussels | 1570 km |
| London | 2188 km |
| Madrid | 2916 km |
| Paris | 1720 km |
| Roma | 1675 km |
| Stockholm | 2255 km |
| Vienna | 475 km |



The most important foreign companies established in Prešov and its surrounding

Prevailing types of industry

engineering industry,
 electro-technical industry,
 textile industry,
 wood-processing industry,
 printing industry,
 food-processing industry



| Name of the company | Country |
|---|--------------|
| ZVL Auto, s.r.o. Prešov | Italy |
| KRONOSPAN SK, s.r.o. | Cyprus |
| Gemor Fashion, s.r.o. | Holland |
| BETATEX, s.r.o. | Belgium |
| EGOTEX, s.r.o. | Italy |
| SPINEA, s.r.o. Prešov | Luxembourg |
| CEMM THOME SK, spol. s r.o. | France |
| LEAR Corporation Seating Slovakia, s.r.o. | USA |
| Glunz & Jensen s.r.o. | Denmark |
| FRANZ KAHL SLOVAKIA s.r.o. | Germany |
| Pivovar Šariš | South Africa |

Average Monthly Wage



| Region, SR | 2008 | | | 2009 | | | 2010 | | |
|-----------------|---|--------|-------|---------|--------|-------|---------|----------|-------|
| | Average monthly wage of employee in the economy of the SR | | | | | | | | |
| | Total | Index | Index | Total | Index | Index | Total | index | index |
| | (EUR) | SR=100 | 2008 | (EUR) | SR=100 | 2009 | (EUR) | SR=100,0 | 2010 |
| | | 2007 | | | 2008 | | | 2009 | |
| Bratislavský | 944 | 131 | 108 | 970 | 130 | 103 | 991 | 129 | 102 |
| Trnavský | 676 | 93,5 | 106 | 689 | 92,5 | 102 | 705 | 91,7 | 102 |
| Trenčiansky | 630 | 87,2 | 108 | 635 | 85,3 | 101 | 657 | 85,4 | 104 |
| Nitriansky | 606 | 83,9 | 110 | 625 | 83,9 | 103 | 636 | 82,7 | 102 |
| Žilinský | 646 | 89,3 | 110 | 657 | 88,2 | 102 | 686 | 89,2 | 104 |
| Banskobystrický | 600 | 83 | 107 | 605 | 81,3 | 101 | 635 | 82,6 | 105 |
| Prešovský | 546 | 75,5 | 110 | 573 | 77 | 105 | 594 | 77,2 | 104 |
| Košický | 672 | 92,9 | 107 | 684 | 91,9 | 102 | 716 | 93,1 | 105 |
| SR spolu | 723 | 100 | 108 | 745 | 100 | 103 | 769 | 100 | 103 |

The lowest personal costs in Slovakia are long term in Prešov region

Average nominal monthly wages (€) in selected branches by months in 2011

| Month | Industry total | of which | | | | Construction | Sale and repair of motor vehicles | Wholesale, except motor vehicles | Retail trade, except motor vehicles | Accommodation | Restaurant and beverage serving | Transport and storage | of which | Information and communication | Selected market services |
|---------------|----------------|----------------------|-----------------------|--|------------------------|--------------|-----------------------------------|----------------------------------|-------------------------------------|---------------|---------------------------------|-----------------------|-------------------------------|-------------------------------|--------------------------|
| | | mining and quarrying | industrial production | electricity gas, steam and air conditioning supply | water supply; sewerage | | | | | | | | Postal and courier activities | | |
| january 2011 | 771 | 823 | 748 | 1239 | 815 | 552 | 723 | 727 | 536 | 555 | 360 | 690 | 604 | 1479 | 792 |
| february 2011 | 756 | 940 | 738 | 1145 | 721 | 537 | 705 | 726 | 533 | 533 | 357 | 660 | 580 | 1707 | 780 |
| march 2011 | 815 | 976 | 793 | 1276 | 806 | 576 | 721 | 735 | 549 | 552 | 359 | 700 | 623 | 1709 | 794 |
| average 2011 | 781 | 913 | 760 | 1220 | 781 | 555 | 716 | 729 | 539 | 547 | 358 | 683 | 602 | 1629 | 789 |

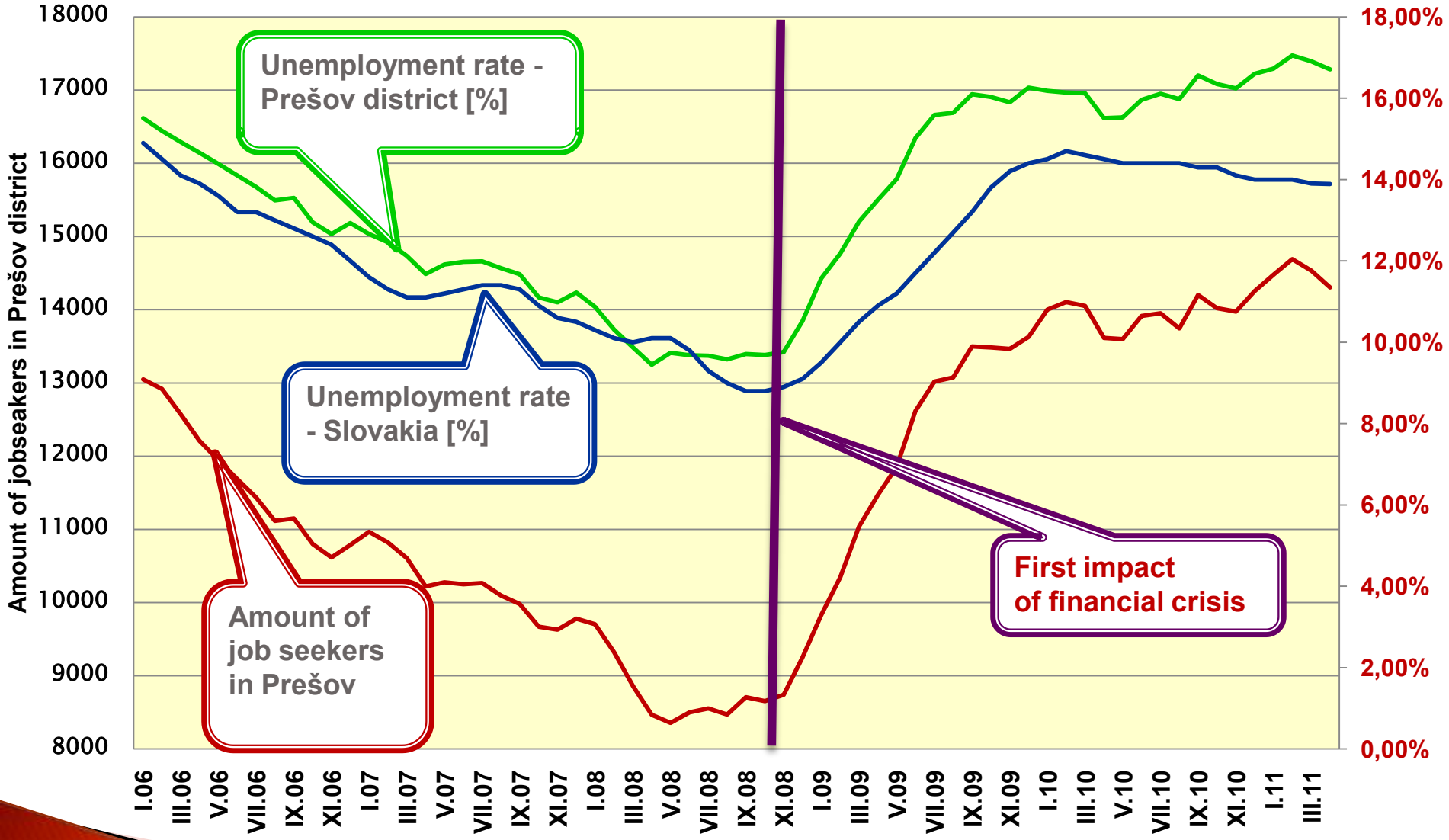
For more information please visit



Statistical Office of the Slovak Republic



Comparison of unemployment rate – Slovakia vs. Prešov district



Unemployment

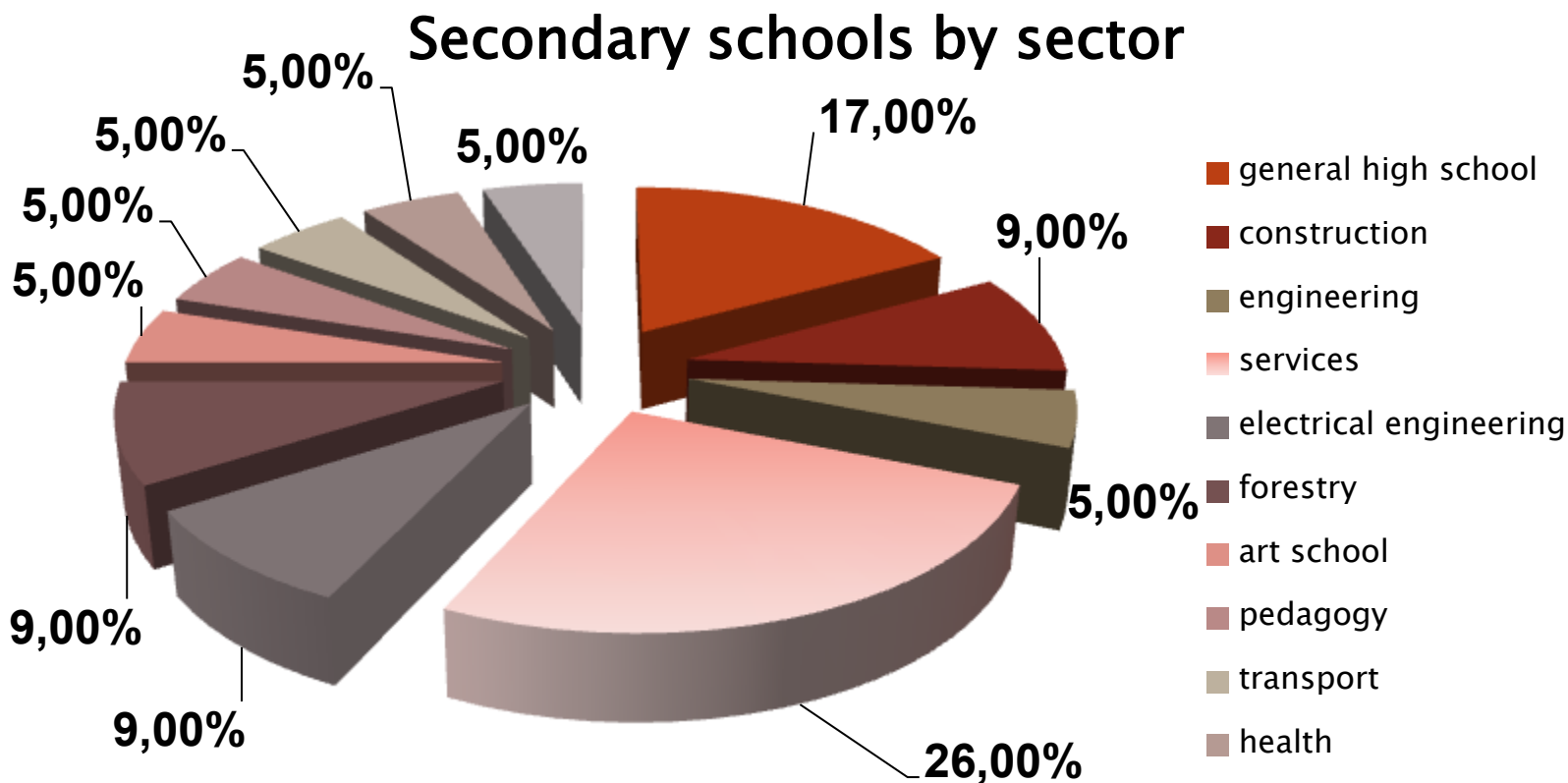


| Region, SR | 2008 | | | | 2009 | | | | 2010 | | | |
|--------------------|-------------------------------------|----------------------|-----------------------|----------------------------------|-----------------------------|----------------------|-----------------------|----------------------------------|-----------------------------|----------------------|-----------------------|----------------------------------|
| | Number of unemployed | | | Unempl oyment rate in % | Number of unemployed | | | Unempl oyment rate in % | Number of unemployed | | | Unempl oyment rate in % |
| | Total (Thou s. perso n) | In % of the SR | Index 2008 2007 | | Total (Thous. person) | In % of the SR | Index 2009 2008 | | Total (Thous. person) | In % of the SR | Index 2010 2009 | |
| Bratislavský | 12,4 | 4,8 | 87,9 | 3,6 | 16,3 | 5 | 131,5 | 4,7 | 20,9 | 5,4 | 128,2 | 6,1 |
| Trnavský | 18,3 | 7,1 | 97,9 | 6,2 | 27,5 | 8,5 | 150,3 | 9,1 | 36,6 | 9,4 | 133,1 | 12 |
| Trenčiansky | 13,9 | 5,4 | 83,2 | 4,7 | 21,4 | 6,6 | 154 | 7,3 | 30,7 | 7,9 | 143,5 | 10,2 |
| Nitriansky | 31,7 | 12,3 | 84,8 | 8,8 | 45,7 | 14,1 | 144,2 | 13 | 54,1 | 13,9 | 118,4 | 15,4 |
| Žilinský | 25,9 | 10,1 | 77,1 | 7,7 | 35,4 | 10,9 | 136,7 | 10,6 | 48,7 | 12,5 | 137,6 | 14,5 |
| Banskobystrický | 59,5 | 23,1 | 91,7 | 18,2 | 59,8 | 18,4 | 100,5 | 18,8 | 60,3 | 15,5 | 100,8 | 18,6 |
| Prešovský | 48,7 | 18,9 | 94,2 | 13 | 62,4 | 19,2 | 128,1 | 16,2 | 72 | 18,5 | 115,4 | 18,6 |
| Košický | 47,2 | 18,3 | 86,3 | 13,5 | 55,8 | 17,2 | 118,2 | 15,5 | 65,8 | 16,9 | 117,9 | 18,3 |
| SR in total | 257,5 | 100 | 88,2 | 9,6 | 324,2 | 100 | 125,9 | 12,1 | 389 | 100 | 120 | 14,4 |



Secondary education

The secondary school system is also well developed. It is represented by 37 secondary schools. Some of the technical oriented schools accept requirements of companies in adjusting syllabus according to the needs of companies.





University of Presov

Consists of 8 faculties:

- [Faculty of Arts](#)
- [Faculty of Greek-Catholic Theology](#)
- [Faculty of Humanities and Natural Sciences](#)
- [Faculty of Management](#)
- [Faculty of Education](#)
- [Faculty of Orthodox Theology](#)
- [Faculty of Sports](#)
- [Faculty of Health Care](#)



Technical university in Košice

Consists of 9 faculties:

- [Faculty of Manufacturing Technologies located in Prešov](#)
- [Faculty of Electrical Engineering and Informatics](#)
- [Faculty of Civil Engineering](#)
- [Faculty of Mechanical Engineering](#)
- [Faculty of Mining, Ecology, Process Control and Geotechnology](#)
- [Faculty of Metallurgy](#)
- [Faculty of Economics](#)
- [Faculty of Arts](#)
- [Faculty of Aeronautics](#)



Partnership between University and factories



Mr. Karaffa , CEO MSC Electronics SR, a member of IT Valley association, established investors in Industrial Park Prešov–Záborské



▶ Activities of the Association:

- ▶ Creation of economic, social, and technological conditions and stimulation of human resources with the goal to build a centre of excellence for information and communication technologies in the region of eastern Slovakia
- ▶ Help and cooperation by increasing the quality of educational and training programs that are offered by the local universities and the IT sector
- ▶ Support of initiatives focusing on making the sector of information and communication technologies in the region of eastern Slovakia more attractive for the workforce, students, and IT companies from all of Slovakia and abroad
- ▶ Support of activities leading to the transformation of eastern Slovakia to a region with a knowledge society and economy
- ▶ Directing the development of the information society in the region
- ▶ Support of initiatives and activities leading to the reduction of regional disparities and to the increase of social inclusion using information and communication technologies (e-inclusion)
- ▶ Creation of a communication platform between the IT industry, public administration and educational institutions in the region
- ▶ Support of science and research projects in the field of IT
- ▶ Search for information sources and support funds for the execution of own activities

„The town of Presov is interested in the allocation status of member associations in IT Valley Association.“
Mr. Pavel Hagyarí, Mayor of city of Prešov 21.3.2011

Forms of Investment Aid

- ▶ **CASH GRANT** (paid *ex post*, based on annual costs rep
- ▶ **INCOME TAX RELIEF** (during 5 years, starting at latest 3 years after approval of the aid)
- ▶ **CONTRIBUTIONS ON NEW JOBS** (up to 40% – 50% of 2-year total labor costs per each new employee) – applicable in districts with unemployment rate higher than average rate
- ▶ **TRANSFER OF THE STATE PROPERTY** to the investor at the discounted price

THE TOTAL SUM OF REQUESTED FORMS **CANNOT EXCEED** THE MAXIMUM POSSIBLE AMOUNT OF THE AID – **40% – 50%** OF THE ELIGIBLE COSTS.

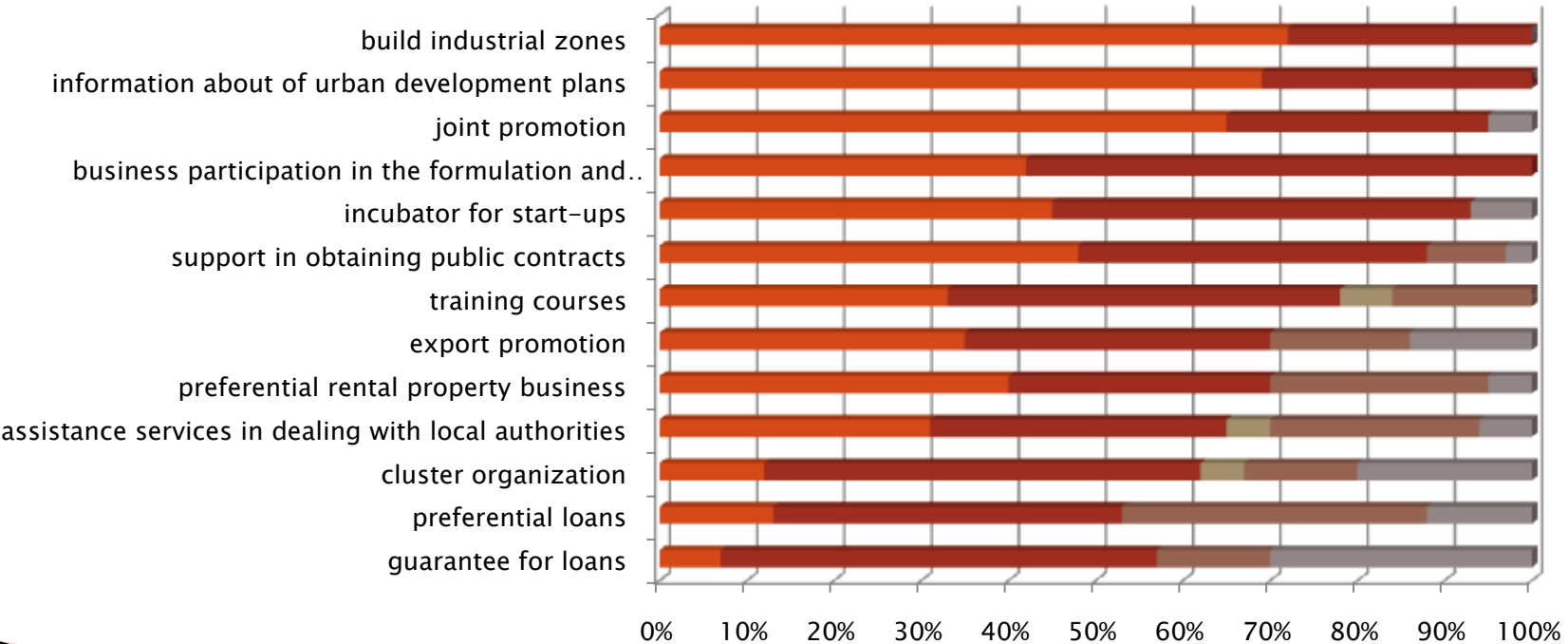
For more information please contact :
Slovak Investment and Trade Development Agency
Martinčekova 17, 821 01 Bratislava, Slovak Republic

www.sario.sk



Research about business environment in Prešov – 7/2007

Definitely yes Rather yes Without view Rather not Definitely not



www.ainova.sk
www.bermangroup.cz

Industrial park Záborské Prešov



- ▶ Greenfield industrial zone
- ▶ Completely ready since 1.1.2009
- ▶ Available area: 300,000 m²
 - Sale (€/m²)
 - Rent (€/year/m²)



INFRASTRUCTURE

▶ Electric power

- Installed capacity:
 - Stage A 2,6-4,6 MW
 - Stage B 4-9,5 MW
 - Stage C 9,5-14,7 MW



▶ Gas

- Middle pressure gas connection D 160, 0,3 MPa
- Gas connection with capacity of 1 000 m³/hr
- Calculated capacity: 300 kPa
- Working capacity : 200 kPa
- Min. working pressure : 60 kPa
- Pipe: PE 100, SDR 17,6
- Length of connection: D 110 – 157 m

▶ Water supply

- Drinking water: max. capacity per hour $Q_m = 10$ l/s, DN/ID 200, PN 10
- Fire-fighting water: max. capacity per hour $Q = 15$ l/s
- Waste water Drainage: Q_s max. = 10 – 25 l/s, Pipes: from DN 300 to DN 600 mm
- Solid waste Internal processing of waste – communal waste disposal

Administration of the industrial park includes

- ▶ Construction activities
- ▶ Engineering and investor activity in construction,
- ▶ Procurement activities associated with performance reports and renting real estate for third parties
- ▶ Energy supply (electricity, heat, gas) and services related to energy supply, water (drinking water and Technology),
- ▶ Waste management, transportation and disposal



Established investors

Honeywell®

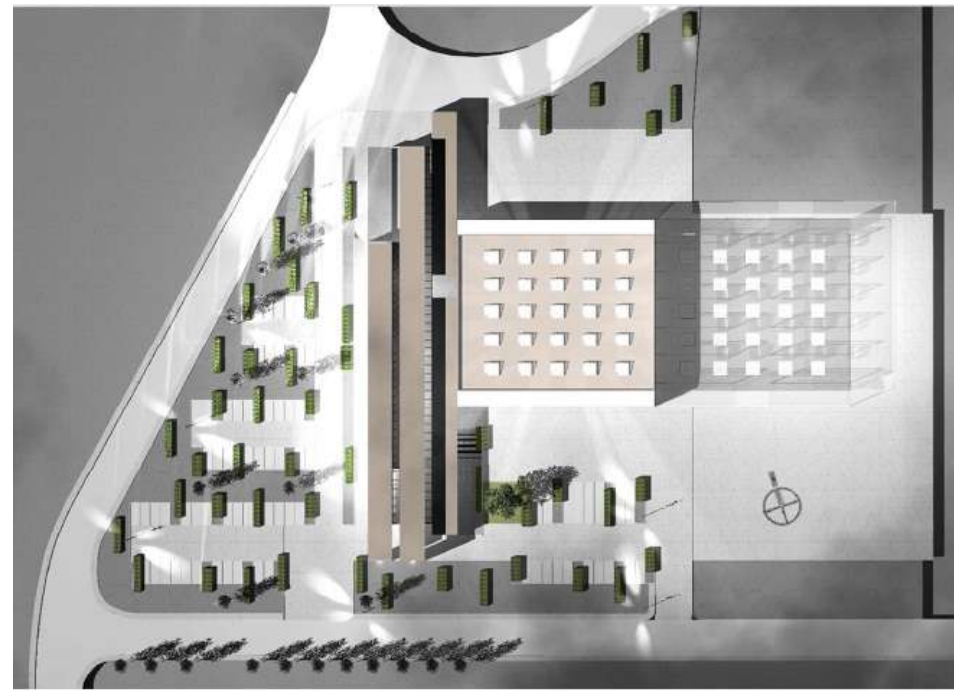


Start of production: spring 2012

Established investors

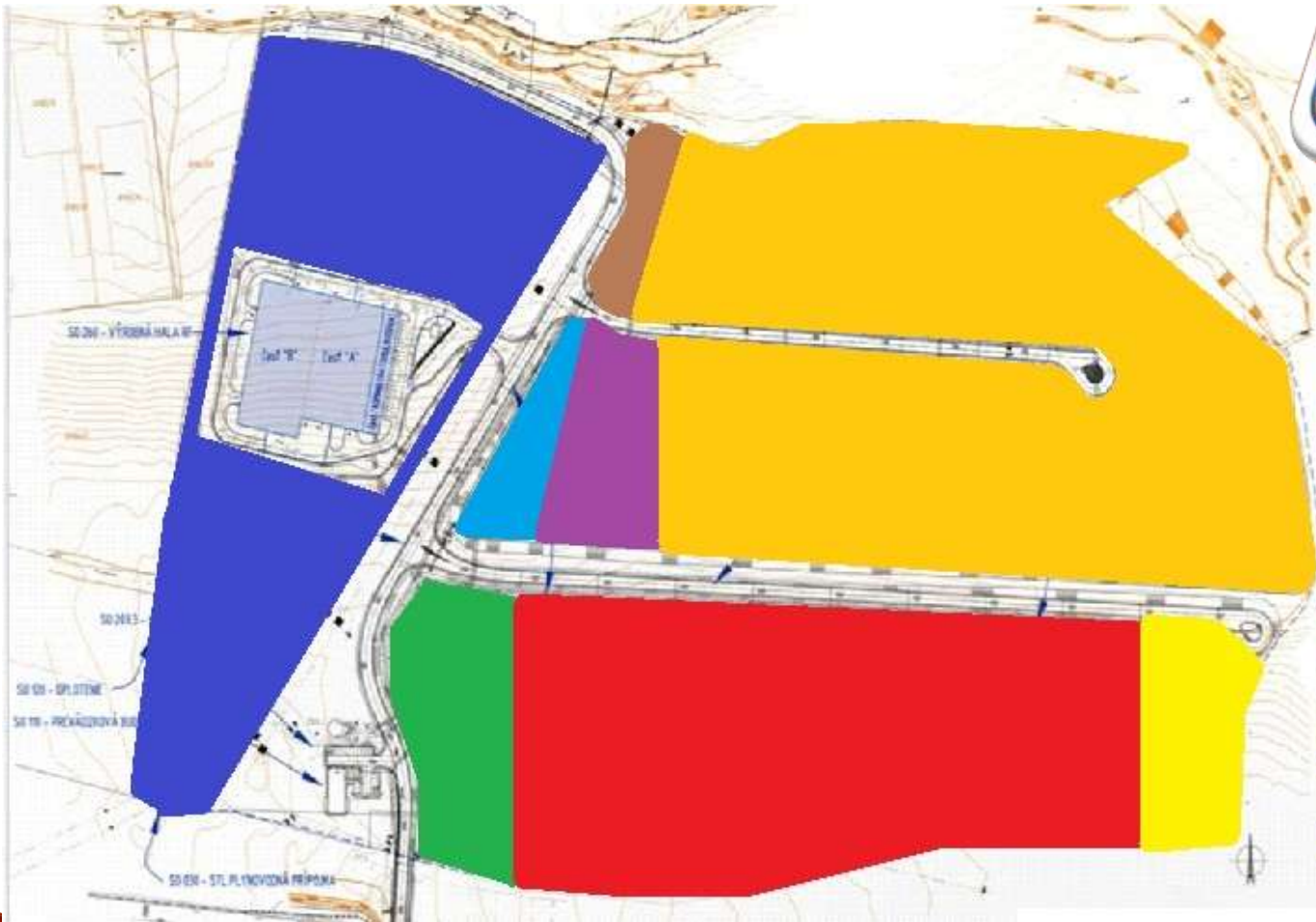


MSC Electronics



Start of production: summer 2012

Zones in Industrial Park Prešov – Záborské



- MSC Electronics
- Honeywell
- reserved for Honeywell
- 1. Honeywell's supplier
- 2. Honeywell's supplier
- FREE cca 10 ha (for sale or rent)
- ASIS - local company
- private developer

Thank you for your attention



For more information please visit our website or contact us

IPZ Prešov, a.s.
Slavomir Murin
Tel: +421 (0) 918 188 665
www.ipzpresov.com
info@ipzpresov.com